



broadcastvision entertainment

CAB – CYBEX E3



For use with Cybex E-3 series consoles with embedded screens.

The dynamic Broadcastvision Entertainment AXSCAB facilitates operation of cable, satellite, and IPTV set top boxes (STB) from console controls. The CAB product should operate in a “plug-and-play” manner once the console is placed into “CAB mode”.

Your CAB is enabled for an application as follows:

Proposal Number: _____

Console Description: CYBEX E3

Set-top Box: _____

If your scenario differs in any way from the information above please call Broadcastvision customer service at 1(888)330-4283 ext.3 for additional support.

Online Service Manuals available at: www.broadcastvision.com

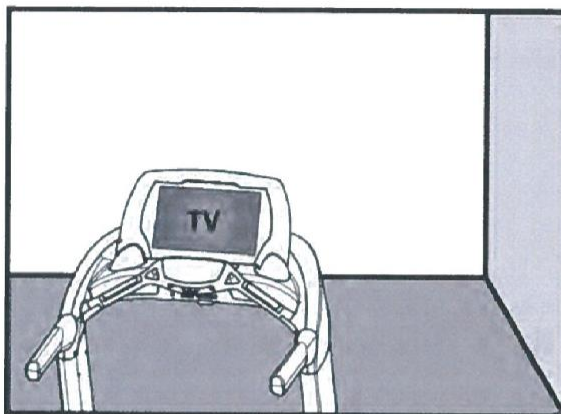


broadcastvision entertainment

1. Plug the console side of the CAB into the gray jack (next to the red console jack of the E3).
2. Enter the manager's configuration mode for the console.

Embedded TV Setup

The embedded TV configuration uses the E3 View Monitor in the console of the product.



Determine TV's signal source

For traditional RF Cable Signal over Coax, or a distributed/modulated club setup over Coax, connect the coax at the base of the unit. Skip to [E3 View Monitor Setup](#).

For installations using a Set Top Box (Cable Box, Satellite Box or IPTV Box) for each unit, determine the output from the Set Top Box. Follow Set Top Box Setup procedure.

- **Coax** - Connect the included coax jumper at the base of the unit. Set the **Device Installed** to **STB+Tuner**.
- **HDMI** - The facility needs to supply the connection cable between the Set Top Box and the HDMI coupler at the base of the unit. Set the **Device Installed** to **STB+HDMI**.

STB (Set Top Box) Setup

Set Top Box Variables

Determine which configuration you have.

Connection options	Ethernet, HDMI, or Coax
Transmitter type	Broadcast Vision Entertainment



broadcastvision entertainment

Installation Instructions

Note: The Broadcastvision CAB should always be installed after the cable/satellite service has already been installed, and you have a picture on the screen. If the set top box is not available at the time of installation you can still run all of the wires and hook up the CAB, but you will not be able to test the CAB to make sure that it is changing channels on the STB.

1. Before attempting to install the CAB start by making sure that the cable/satellite box is properly hooked up to the screen and you have a picture on the screen. If you do not have picture make sure that you are on the appropriate input or channel (usually 3 or 4) before proceeding to the next step.
2. If the console is not new make sure that the console has the appropriate newer firmware. E3 Consoles must have firmware v1.34.090 or newer to operate with the CAB. Older consoles will need to be updated through Cybex to allow for CAB support.
3. The CAB translates the console commands to the personal viewing screen and cable or satellite box if applicable. Plug the cable from the console (provided from the cardio equipment manufacturer) into the console side of the CAB.
4. Next connect the STB side of the CAB and secure it to the back of the console with the supplied Velcro.
5. Once the CAB is hooked up you will need to run the IR emitter cable down the machine to the base of the cardio. There it will connect to either the set top box via the IR emitter or a cat5/6 cable for sending the signal to an AV closet through Ethernet cable populated in the floor

Tip: since the IR wire is very thin and easily damaged it is better to run the emitter wire through the machine (see page 5 for a wire management example).

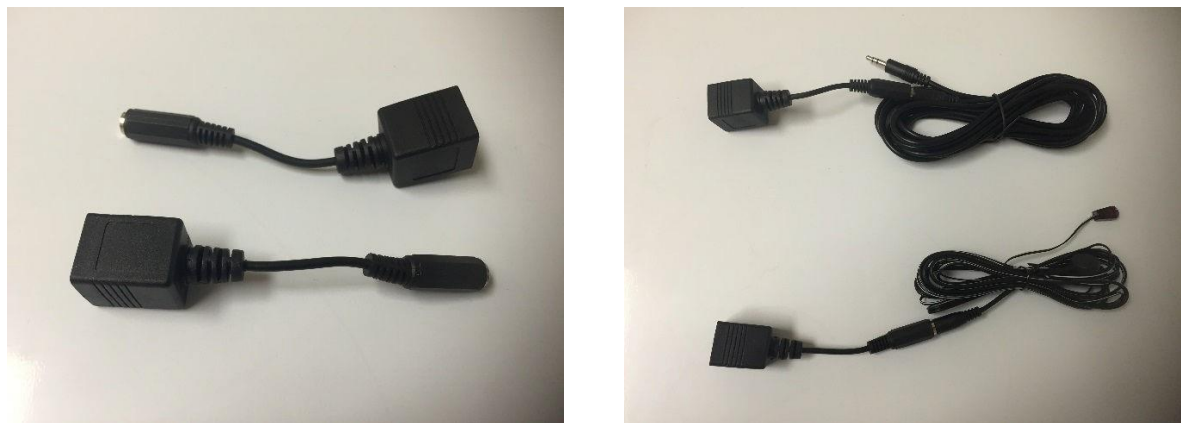


broadcastvision entertainment

6. Place the the infrared eye from the BVe supplied cable over the front of the set top box. If you cannot see where the IR eye is on the front of the STB, shining a flashlight at the front of the box will usually help you to see the IR eye. Please see the IR eye locations of some of the most common STB's below:



7. If the set top boxes are located in another room, the supplied cat5 adapters will allow you to use a standard cat5/6 wire from each cardio machine to pass the IR signal back to the AV closet.





broadcastvision entertainment

8. IR emitter shields are included with each CAB in order to help protect the emitter and keep it in place. Do not install the emitter shields until you are sure that the CAB is working properly.



Once installed if the CAB does not work for any reason check the Troubleshooting Guide below or if necessary call technical support at 1(888)330-4283 ext.3 before leaving the facility.



broadcastvision entertainment

Troubleshooting Guide:

1. **Double button presses** – Some set top boxes respond to more than one of the IR codes that we send out. If you notice that pressing a channel button on the console results in multiple presses, simply remove the 2 screws that hold the lid on the CAB and turn on dip switch 2 and 4. If this does not solve the problem, call (888)330-4283 ext.3 for further assistance.

2. **No control over set top box**

- a. **Check if CAB is getting power and channel commands from the console** – CAB contains internal LED power lights. Two indicator LEDs are located on either side of the console-side connector inside the enclosure.
- **GREEN** - Power LED, on whenever the CAB is powered
 - **RED** - Activity LED, flashes whenever the CAB receives and processes commands

The location of the LEDs is such that they should be visible through the enclosure around the CAB connector to the console.

- b. **Incorrect IR emitter placement** – If the IR emitter is not in the correct location on the front of the box you may need to move it around until you find the location that works.

Tip: Try initially holding the IR emitter away from the front of the STB initially then continue pressing the channel button while “zeroing in” on the correct IR emitter placement.

- c. **Set top box is in RF mode – change to IR mode** – Many set top boxes can operate with a hand-held remote in RF or IR mode. For the CAB to function, it is critical that the STB accepts IR channel commands. To test if the STB is in RF mode, place your hand over the hand-held remote control IR transmitter and see if the STB receives channel change commands. If the answer is yes, the STB is in RF mode. Check online for instructions to change the STB remote control mode from RF to IR.

- d. **IR signal strength issue** – In rare circumstances, the CAB may output too strong of an IR signal for the set top box IR receiver. To test if the IR emitter is over-driving the set top box receiver, pull the emitter away from the front of the set top box, and press the channel button to see if the set top box now receives the channel command. Opening up the CAB and turning on dip switch #8 will reduce the IR current by 50% and solve this issue.

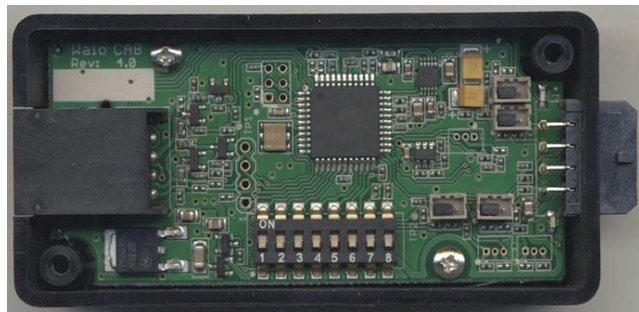
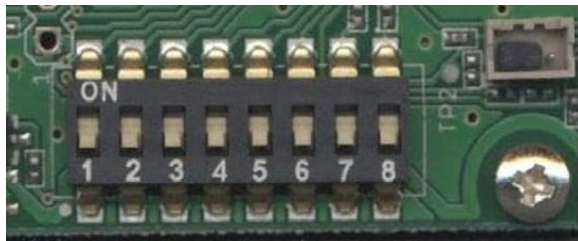


broadcastvision entertainment

- e. **No Continuity between CAB and IR emitter** – In some circumstances utilizing the “Far” set top box scenario, the CAT5/6 cable between the set top box and the CAB may not provide full continuity through wall plates etc. It may be helpful to re-locate the STB at the base of the cardio and re-test. Or, it may be helpful to temporarily run an alternate CAT5/6 cable from the CAB to the set top box then re-test.
- f. **CAB not programed for the correct set top box** - Your CAB is defaulted for Broadcastvision’s popular “Unicode” setting which provides control of the most popular cable and IPTV set top boxes including, but not limited to:
 - AT&T Uverse, Brighthouse, Comcast, Time Warner, and Verizon

The CAB can be quickly configured on site to operate other popular set top boxes by flipping dip switches inside the CAB enclosure as pictured below. CAB operates with many other set top boxes not included in the list below. Please call BroadcastVision support at 8883304283 x3 to determine the dip switch settings for your cable, satellite, or IPTV provider.

- 1 2 3 4 5 = Dip Switch settings for the following set top boxes:
- 0 0 0 1 1 - CAB will output commands for Amino set top boxes
 - 1 1 1 0 1 - CAB will output commands for Enseio set top boxes
 - 0 0 1 0 1 - CAB will output commands for LG set top boxes
 - 0 1 0 0 1 - CAB will output commands for Rogers set top boxes
 - 1 0 0 0 1 - CAB will output commands for Cox set top boxes
 - 0 1 0 1 0 - CAB will output commands for Charter set top boxes
 - 1 0 0 1 0 - CAB will output commands for Unicode-Satellite for DirecTV and Dish set top boxes





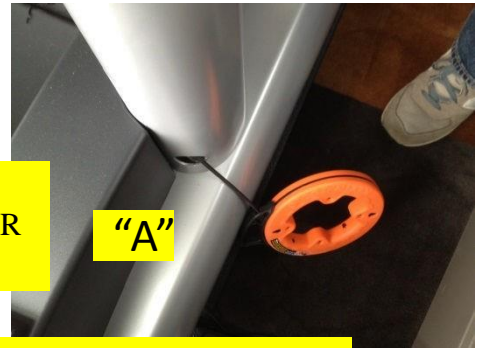
broadcastvision entertainment

WIRE MANAGEMENT



1. Remove cap at base of Treadmill leg

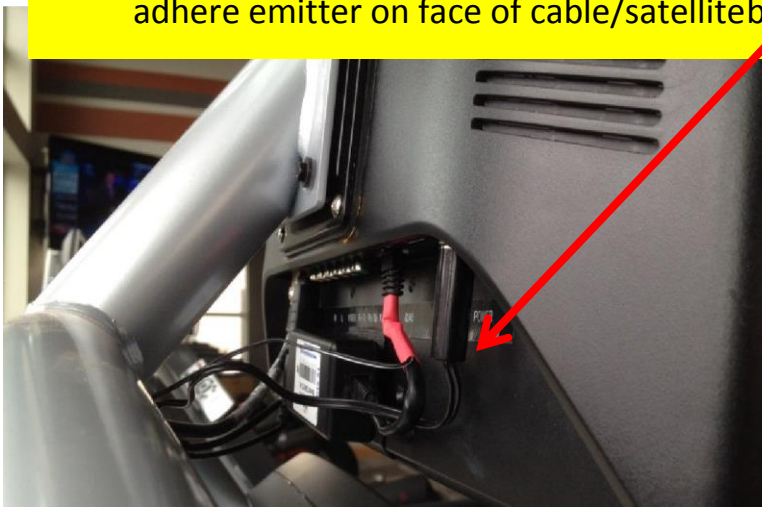
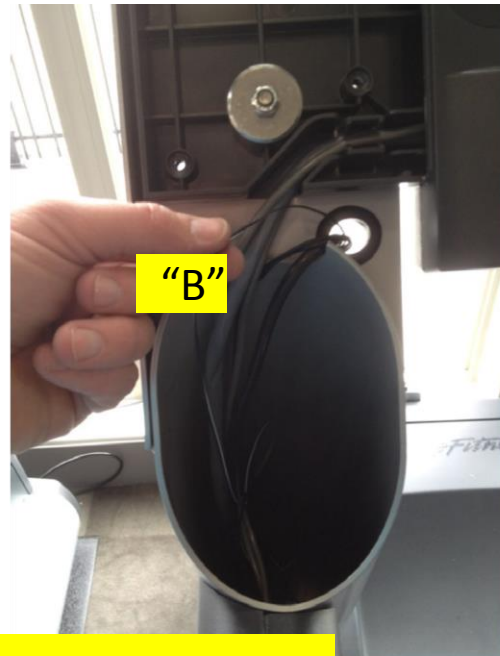
Sample Path to route IR cable Through Treadmill (In this case, Life Fitness Integrity). Call for AUXIR cable routing suggestions if needed.



2. Push pull tape through path "A", "B", and "C" in pictures



3. Pull through AUXIR cable taped to pull tape and reinstall cap, secure CAB at screen, and adhere emitter on face of cable/satellitebox





broadcastvision entertainment

Broadcastvision Entertainment Terms and Conditions

BVE Stock Items Returned for Credit

BVE manufactured products may only be returned for credit with written authorization from BVE within 30 days of the original invoice date. A 25% restocking fee will be charged for all returns. All products being returned to BVE require a Return Authorization number. Products must be returned in original condition with the original packaging, components and support material. Credit is contingent upon inspection of returned items.

Return Authorizations

A Return Authorization number must be issued from BVE prior to any item being returned for credit, repair or exchange. Items returned without approval will be refused and returned to the sender. Requests for a Return Authorization number may be made to our Customer Service Department at 1-888-330-4283.

Repairs and Replacements

A warranty repair of BVE manufactured product includes parts, labor and the return GROUND shipping to the customer. Repairs made while under warranty are covered for the duration of the valid warranty period. Non-Warranty repairs receive a "Repair Warranty" of 90 days parts and labor only. Warranties do not include on-site service. Advance Replacements of items in question may be arranged if the product is within 30 days of invoice date and is subject to product availability. Advance Replacements must be secured by the customer with a valid Credit Card or Net30 terms of an account in good standing.

Shipping

Shipping dates are estimates only. Products will be shipped per the designated Shipping Method. Paying for an accelerated Shipping Method only indicates the product will ship by that method when the product or repair is available. BVE will not be held responsible to accelerate shipping, discount invoices or compensate customers for loss of profits, business or goodwill due to back orders, shortages, shipping complications, damages, product malfunction, labor, construction, nature or delays.

Warranties

All products sold by BVE carry the original manufacturers' warranty. Warranty begins on the invoice date of purchase from BVE or an authorized BVE Dealer / Distributor. Warranty may alternately begin on the date of installation with a valid Installation Completion Form from an authorized BVE Dealer, Distributor or Installer. Warranties do not cover damage due to abuse, misuse, modification or the result of any third party. Warranties are not transferable and cover only the original purchaser with a valid invoice. Manufacturers will, at their option repair or replace equipment, as they deem necessary. Warranties do not include "on-site" service.