

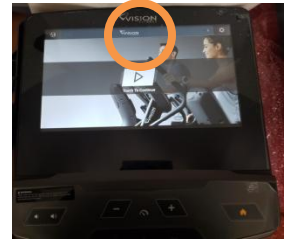
CAB MANUAL FOR MATRIX V600E CONSOLE FOR CABLE/SATELLITE BOX CONTROL – Part # CAB-MATRIX-V600E



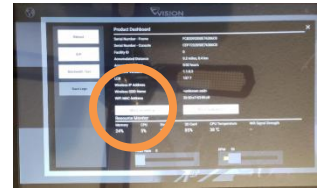
BVE Technical Support
Tel: 888.330.4283 x 3 Support@Broadcastvision.com

ACCESS MENU ON CONSOLE TO SET UP FOR CAB CONTROL

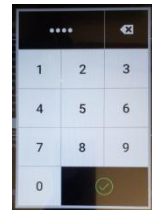
1. Press and HOLD Vision logo for 3-5 seconds



2. Select Machine Settings



3. Type 3001 enter on the touch keypad



4. Select TV

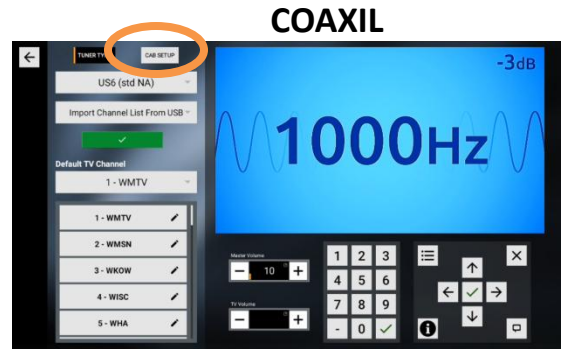


5. Select TV Channel Setup



ACCESS MENU ON CONSOLE TO SET UP FOR CAB CONTROL (Cont.)

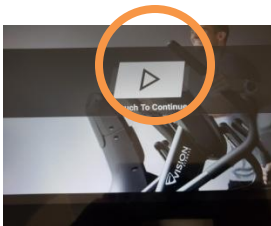
6. Select HDMI if you are connecting the console to the cable/satellite box using an HDMI cable. Select US6 if you are connecting via a Coaxial cable. Once selected, click CAB SET UP.



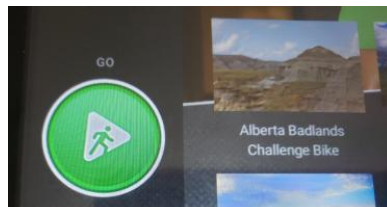
7. Select default channel for cable or satellite box (3 or 4). This will mirror what you select on the cable/satellite box. Press the home icon on the top left corner of the screen.



8. Touch to Continue



9. Select GO



10. Select TV



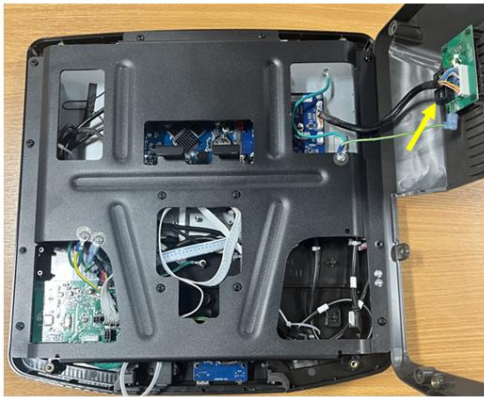
How to Prepare the Console To Install the CAB

- The V600 Entertainment console lacks an external port for connecting the CAB. Therefore, it will be necessary to drill an entry point on the shroud.

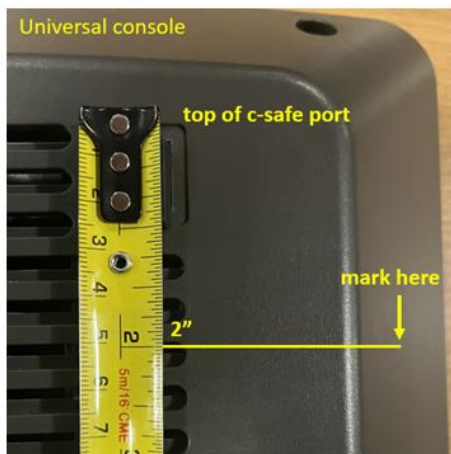
Parts Needed:

- Tape measure
- Pen or something to mark the console shroud
- Drill with ½” drill bit

Location of internal CSAFE Port



- Using a tape measure, measure 2 inches from the top of the C-Safe port. With a pen or marking tool, place a mark in the middle of the sloped side of the console shroud at 2 inches down from the C-safe port.



How to Prepare the Console To Install the CAB (Cont.)

- Using a ½ inch drill bit and drill, carefully drill a hole at your mark. The plastic shroud is thin, so do not press hard when you drill as you do not want to damage any wires.

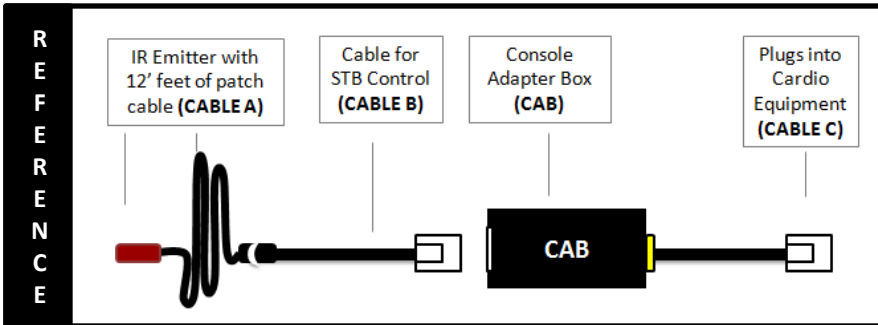


How to Install the CAB

11. Thread the yellow band side of the CAB (RJ45 connection) through the hole and plug into the TV port (always the bottom of the 2 ports).



How to Install the CAB (Cont.)



12. If not already pre-assembled, plug the other end of CABLE C into the CAB.
13. Connect (CABLE B) into the other side of the CAB. You can plug (CABLE A) which is a 12 foot IR cable that is used when the cable or satellite box is next to the cardio equipment or you can use the adapters included that will allow you to extend the IR signal over CAT5.
14. If the cable, satellite or IPTV box (set top box) is located next to the cardio equipment, remove the backing on the IR emitter (CABLE A) and stick onto the set top box (over the IR eye on the STB). Place the IR shield over the IR emitter to help secure the emitter to the STB and to eliminate bleeding of IR signal.
15. Please check the cable and satellite box to confirm the channel selected mirrors the channel selected (either channel 3 or 4) in step 5. Press the channel controls on the console to confirm the channels are changing and to confirm CAB is operating correctly.

Note: If you cannot see where the IR eye is on the front of the STB, shining a flashlight at the front of the box will usually help you to see the IR eye. Please see the IR eye locations of some of the most common STB's below:



Troubleshooting

Double button presses – Some set top boxes respond to more than one of the IR codes that we send out. If you notice that pressing a channel button on the console results in multiple channel changes, simply remove the 2 screws that hold the lid on the CAB and turn on dip switch 2 and 4. If this does not solve the problem, call (888)330-4283 ext.3 for further assistance.

No control over set top box

Check if CAB is getting power and channel commands from the console – CAB contains internal LED power lights. Two indicator LEDs are located on either side of the console-side connector inside the CAB enclosure.

GREEN - Power LED, on whenever the CAB is powered. If there is no green light, this means the CAB is not getting power from the console.

RED - Activity LED, flashes whenever the CAB receives and processes channel up and down commands. This is a good test to confirm if the console is communicating properly with the CAB.

The location of the LEDs is such that they should be visible through the enclosure around the CAB connector to the console.

Incorrect IR emitter placement – If the IR emitter is not in the correct location on the front of the box you may need to move it around until you find the location that works.

Tip: Try initially holding the IR emitter away from the front of the STB initially then continue pressing the channel button while “zeroing in” on the correct IR emitter placement.

Set top box is in RF mode – change to IR mode – Many set top boxes can operate with a hand-held remote in RF or IR mode. For the CAB to function, it is critical that the STB accepts IR channel commands. To test if the STB is in RF mode, place your hand over the hand-held remote control IR transmitter and see if the STB receives channel change commands. If the answer is yes, the STB is in RF mode. Check online for instructions to change the STB remote control mode from RF to IR.

Troubleshooting (Cont.)

No control over set top box (Cont.)

IR signal strength issue – In rare circumstances, the CAB may output too strong of an IR signal for the set top box IR receiver. To test if the IR emitter is over-driving the set top box receiver, pull the emitter away from the front of the set top box, and press the channel button to see if the set top box now receives the channel.

No Continuity between CAB and IR emitter – In some circumstances utilizing the “Far” set top box scenario, the CAT5/6 cable between the set top box and the CAB may not provide full continuity through wall plates etc. It may be helpful to re-locate the STB at the base of the cardio and re-test. Or, it may be helpful to temporarily run an alternate CAT5/6 cable from the CAB to the set top box then re-test.

CAB not programmed for the correct set top box - Your CAB is defaulted for Broadcastvision’s popular “Unicode” setting which provides control of the most popular cable, satellite and IPTV set top boxes.

The CAB can be quickly configured on site to operate other popular set top boxes by flipping dip switches inside the CAB enclosure as pictured below. All CABs are shipped pre-programmed what we call unicode. Unicode works with most of the well known providers. If for some reason the CAB is not operational, please call Broadcastvision support at **888.330.4283 x 3** to determine the dip switch settings for your cable, satellite, or IPTV provider.

Note: When the CAB is shipped pre-programmed, the dipswitch setting will be in the OFF position.

