



broadcastvision
entertainment



Part #: CAB – PRECOR-P62

The Precor P62 console with [media adapter kit](#) can now control ANY cable, satellite or IPTV set top box using the CAB (console adapter box) from Broadcastvision Entertainment.



PLEASE NOTE: The media adapter kit from Precor must be included and only the HDMI connection can be used for TV signal. The Coax connection will not operate with the CAB.

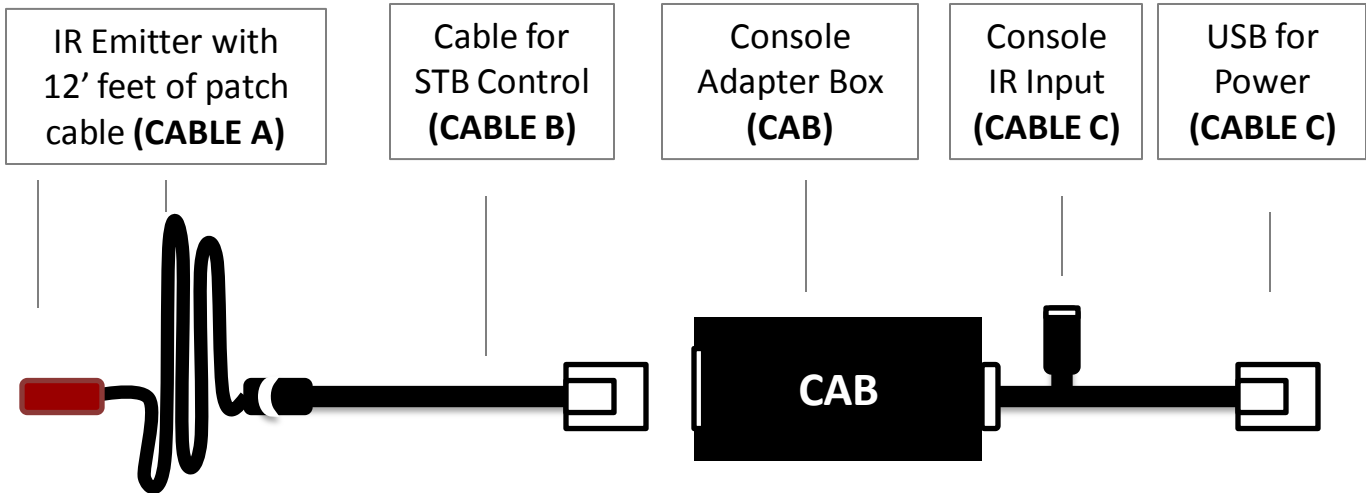
Benefits:

- Eliminates the hand-held battery operated remote control.
- Members can control the TV using cardio equipment console controls.
- An expensive head-end system is not required.
- Club operators can choose ANY cable, satellite or IPTV provider.
- TV channels are not restricted.
- Members can access all the channels available per your subscription.
- No troublesome wireless devices to manage.
- Proven Technology - Broadcastvision first offered a solution for set top box control in 2011 and is the clear-cut market leader in this technology.

BVE Technical Support

Tel: 888.330.4283 x 3 Support@Broadcastvision.com

CAB Configuration - Precor P62 w/media adapter



The CAB ships pre-configured by BVE for the target STB at customer facility. Normally no additional configuration steps are required. ***If the CAB does not work for any reason please call technical support at 1(888)330-4283 ext.3 before leaving the facility.*** BVE's technical support staff is happy to help troubleshoot your problems and get the CAB working properly.

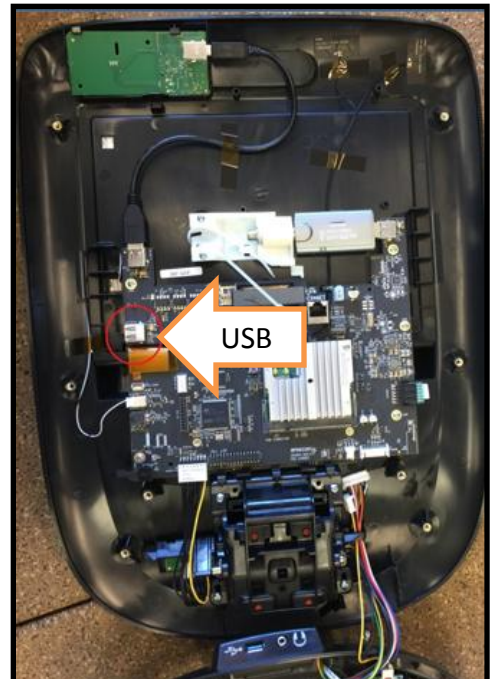
The CAB contains 8 dip-switches internally. Normally these should all be in the **OFF position**. To help solve specific deployment compatibility challenges, BVE Technical Support may instruct that some of the switch positions be changed – see the Troubleshooting section at the end of this manual for common settings or call Broadcastvision technical support for additional assistance.

Note: The Broadcastvision CAB should always be installed after the cable/satellite service has already been installed/activated and you have a picture on the screen. If the Set Top Box (STB) is not available at the time of installation you can still run all of the wires and hook up the CAB, but you will not be able to test the CAB to make sure that it is changing channels on the STB.

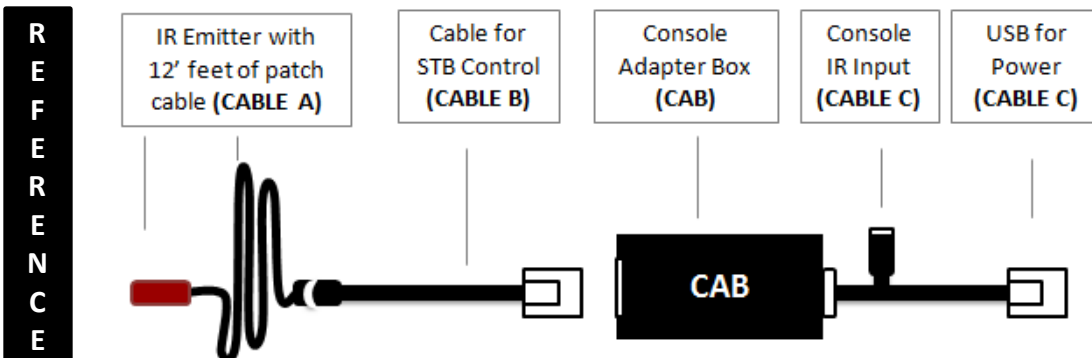
Installation Instructions - Precor P62 (w/media adapter)

STEP 1 - When possible, install the USB to RJ45 patch prior to installing console on unit. If this has been accomplished, skip to **STEP 2**. If console has already been installed on unit with out connecting the USB to the RJ45, disconnect all cables and remove console from the unit.

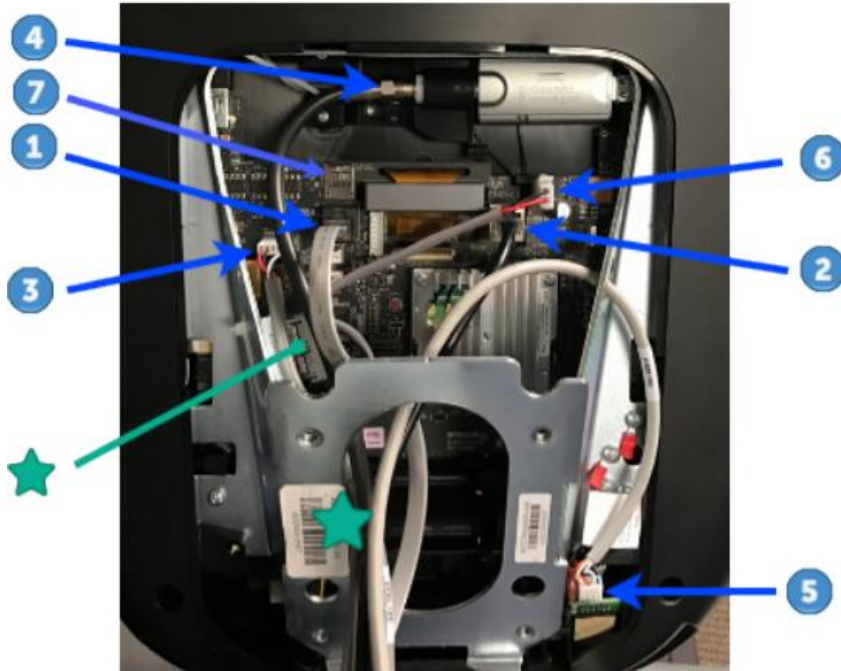
- A. Place console face-down on a soft, scratch-free surface and remove rear cable access cover.
- B. Remove 8 Phillips screws holding back cover (6 in plastic, 2 through metal armor) and carefully remove back cover and armor from P62.
- C. Plug CABLE C from the CAB into the USB port for power.
- D. Be aware of wires near the headphone jack when connecting back cover to P62. Ground wire and HR wire will need to be unplugged at minimum. Back cover can be pivoted as shown.
- E. Reconnect wires unplugged at step B and pivot back cover onto P62 while routing other end of USB to RJ45 patch cable through hole in P62 back armor (see picture on next page). Use caution to avoid pinching wires.
- F. Reattach back cover using 8 screws removed in step B.



WARNING - Use extreme caution to avoid damaging board, connectors, or cables when accessing Spare USB Port on P62 since Precor will not warranty and many parts are not available.



P62 Back of Console Diagram



| CONNECTOR LOCATION | INTERFACE DESCRIPTION | CONNECTOR/DEVICE TYPE |
|--------------------|-------------------------------------|--|
| 1 | COMM Data Cable ⁽¹⁾ | Black color RJ45 eight pin modular (flat gray Data cable). |
| 2 | Ethernet (LAN) Cable ⁽¹⁾ | Silver color RJ45 eight pin modular connector (round black LAN cable). |
| 3 | E-Stop Switch Cable (TRM Only) | Six pin strip, keyed. |
| 4 | RF (TV) Cable with Isolator | F-Type coax |
| 5 | HHHR Sensor Input Cable | Four pin strip, keyed. |
| 6 | DC Input Power | Two pin plug (see ★) |
| 7 | microSD mass storage | .microSD memory card |
| ★ | Ferrite cable clamp | The input power cable must be looped thru the ferrite cable clamp. |

Notes:

(1) Be careful to NOT connect the COMM Data Cable 3 to the Ethernet input port 4 which can damage the CPA board.

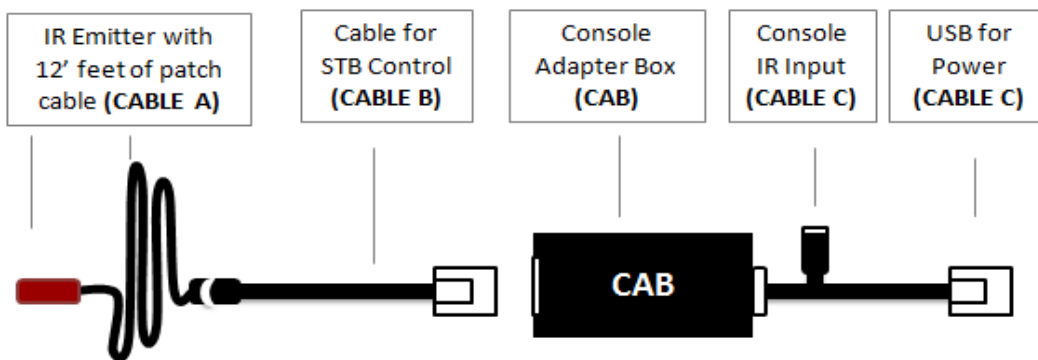
Installation Instructions Precor P62 (w/media adapter)

STEP 2 – Feed the USB cable for the CAB and the other cables including IR, power, Ethernet and HDMI through the back armor plate.



Run cables through
back plate

STEP 3 – Connect the IR input from the console into **CABLE C** and connect **CABLE B** to the CAB.



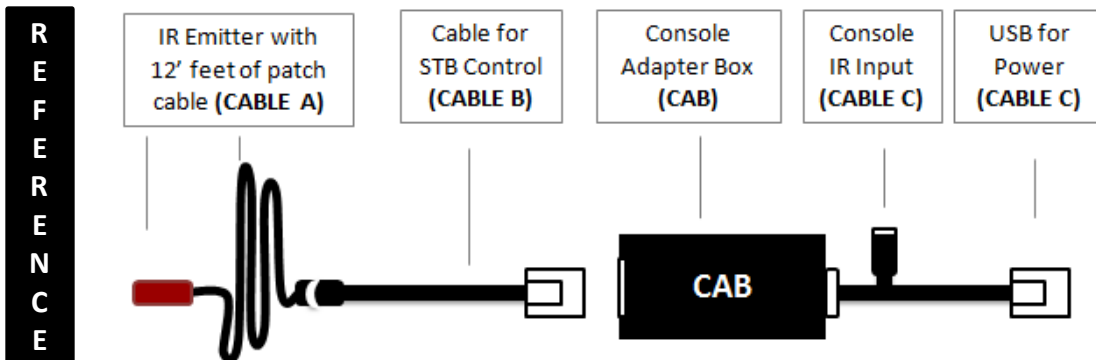
STEP 4 – Install the CAB (using the double sided velcro) inside the back armor plate.

Install behind plate



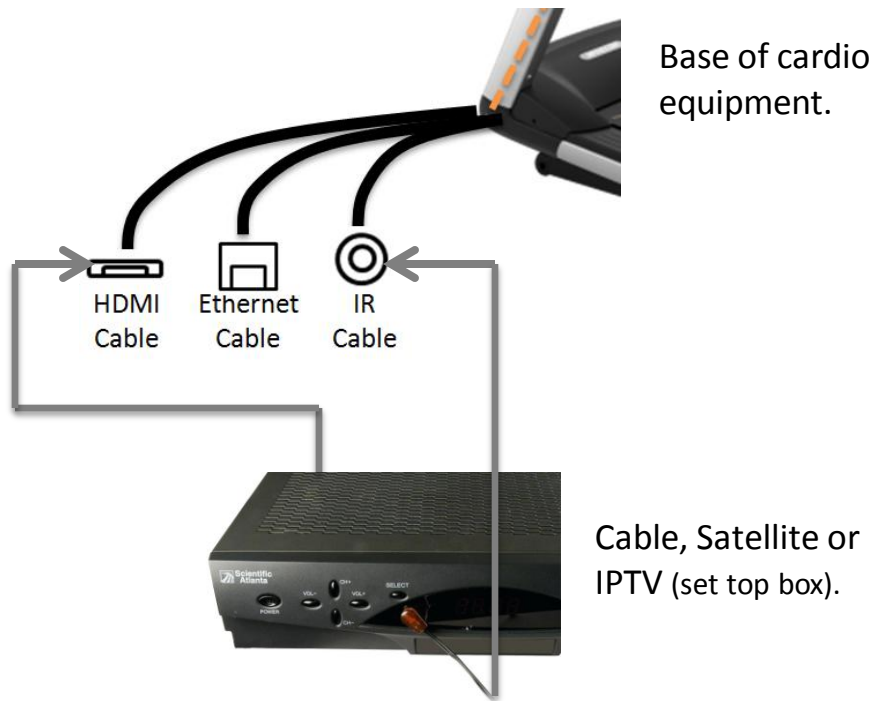
Installation Instructions Precor P62 (w/media adapter)

STEP 5 - Run the IR emitter patch cable (12' in length) from the CAB and the HDMI, power and Ethernet cable provided by Precor down to the base of the equipment.



Installation Instructions Precor P62 (w/media adapter)

STEP 6 – Connect the IR emitter cable into the patch cable coming out of the cardio equipment. If the cable, satellite or IPTV box (set top box) is next to the cardio equipment, connect the IR emitter onto the set top box & plug the HDMI cable into the STB.

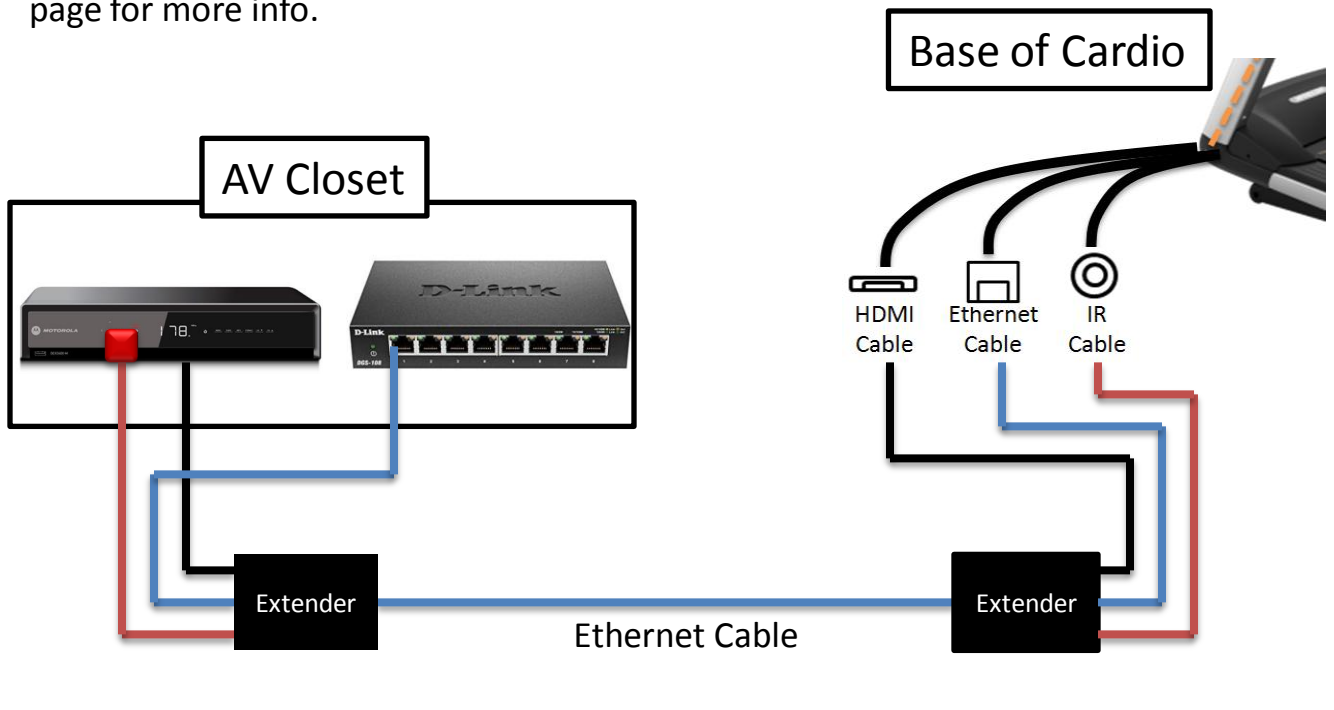


Note: If you cannot see where the IR eye is on the front of the STB, shining a flashlight at the front of the box will usually help you to see the IR eye. Please see the IR eye locations of some of the most common STB's below:



Installation Instructions Precor P62 (w/media adapter)

WIRING DIAGRAM if set top box is located away from cardio equipment— There are many factors that determine what extenders are needed and how to configure the wiring. The example below is an example only and not a recommendation. The diagram below is based on one Ethernet cable that was installed to each piece of cardio equipment. HDMI, IR and internet will be pushed through one Ethernet cable using an extender. The extenders will need power and depending on the type of extender they may need power on both ends. We recommend running at least 2 Ethernet cables since the cost of the extenders are less and the system will be more reliable. Please review the next page for more info.



Please see the next page for additional wiring diagrams including our recommendations.

Wiring Diagrams

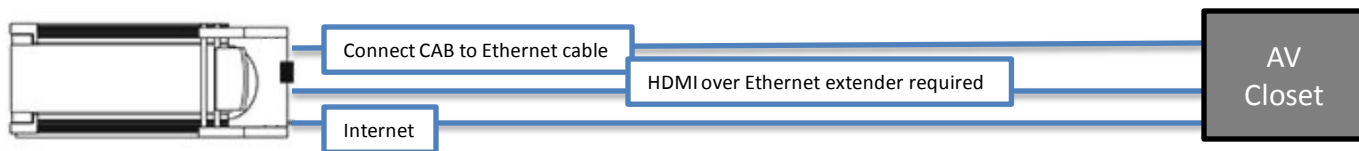
WIRING DIAGRAMS if set top box is located away from cardio equipment

SCENARIO

- STB away from cardio equipment
- Internet is required for cardio equipment
- P62 w/media adapter kit

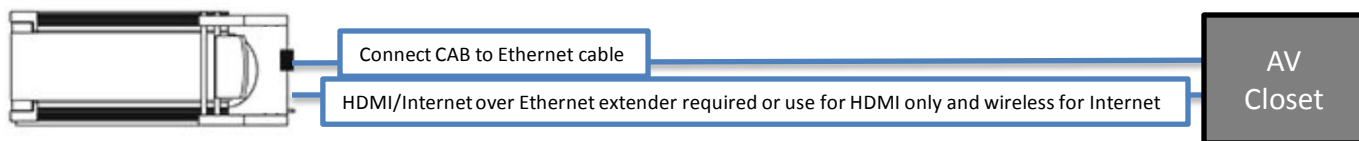
PREFERRED – Extender less expensive and set up more reliable.

Option 1 – (3 Ethernet cables) – Cardio equip must have HDMI input.



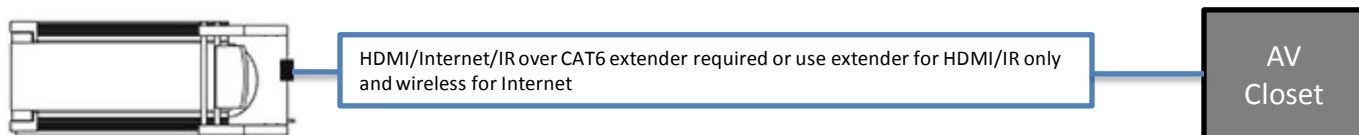
GOOD – Extender affordable & not much risk of having issues.

Option 2 – (2 Ethernet cables) – Cardio equip must have HDMI input.



RISKY – Extender more expensive & potential issues if cable is not ran correctly.

Option 3 – (1 Ethernet cable) – Cardio equip must have HDMI input.





broadcastvision
entertainment



Console Configuration Precor P62 (w/media adapter)

HOW IT WORKS

The Precor console can be configured to tune antenna signals directly or it can be configured to operate directly with either of these Set Top Boxes (no CAB required):

- **DirectTV**
- **Enseo**

The Precor Media Adapter console sends IR control signals to these STBs via an IR Emitter connected to a cable from the console.

The CAB allows the console to control a wider variety of STBs by intercepting the console's IR control signal, interpreting it, and then retransmitting in any of the IR STB protocols supported by CAB. The custom cable connects the CAB to the console's USB (solely to provide power to the CAB) and also to the console's IR emitter cable in order to receive the STB control output signal.

The CAB knows how to receive and interpret the control signals for the Enseo STB only. Therefore, the console must be configured as if it was being used with an Enseo STB (see details in next section). The correct signal will go to the CAB and it will translate into any of its other supported STB signal formats.

CONSOLE CONFIGURATION

The information in this section is critical to successful deployment – **please read carefully!** The information in this section is a brief summary, please reference the following precor documents listed below for additional information and details:

<https://precort-articulate.s3.amazonaws.com/ServiceManuals/SM-HTML5Output/P82Console/Content/PDF/P82ConsoleServiceManual-20039-181.pdf>

BVE Technical Support

Tel: 888.330.4283 x 3 Support@Broadcastvision.com

Console Configuration Precor P62 (w/media adapter)

The console must be set up for the correct mapping of channel names to channel numbers, for whatever cable/sat service being used at its location. This setup is pretty much the same in a CAB application as it is in an application where the console directly controls an Enseo or DirecTV STB, the one exception is that the CAB requires all channels be mapped to the **Enseo STB** model in the Precor setup. So for the most part, the above-mentioned Precor documentation can be followed to accomplish the setup, but an executive summary is presented here.

Precor documentation describes how to copy existing setups from one console and redeploy it to other consoles. This summary assumes one is creating a new setup from scratch, using Precor's "Channel Editor" software:

Obtain Precor "**Channel Editor**" software from Precor

1. See Precor documentation referenced above for detailed use instructions
2. Use the software to enter channel names and channel numbers into a list
3. In other words, create a "channel lineup" for the service provider being used
4. **For all channels, the STB Model must be selected as "ENSEO"**
5. Save the channel lineup into a file on a USB stick
6. File name **must be**: channel-guide.json
7. File location **must be**: in a folder named "precor" located in root directory of USB stick
8. Enter the console's configuration menu and import the channel lineup
9. See Precor documents for detailed use instructions



| Type | Display # | Name | Tuning | STB Model |
|------------|-----------|-------------------|--------|-----------|
| SETTOP_BOX | 007 | ABC | 007 | ENSEO |
| SETTOP_BOX | 004 | CBS | 004 | ENSEO |
| SETTOP_BOX | 013 | FOX | 013 | ENSEO |
| SETTOP_BOX | 009 | NBC | 009 | ENSEO |
| SETTOP_BOX | 002 | CW | 002 | ENSEO |
| SETTOP_BOX | 006 | PBS - KRMA | 006 | ENSEO |
| SETTOP_BOX | 003 | KCDO | 003 | ENSEO |
| SETTOP_BOX | 005 | MY TV | 005 | ENSEO |
| SETTOP_BOX | 008 | Government Access | 008 | ENSEO |
| SETTOP_BOX | 010 | Univision | 010 | ENSEO |

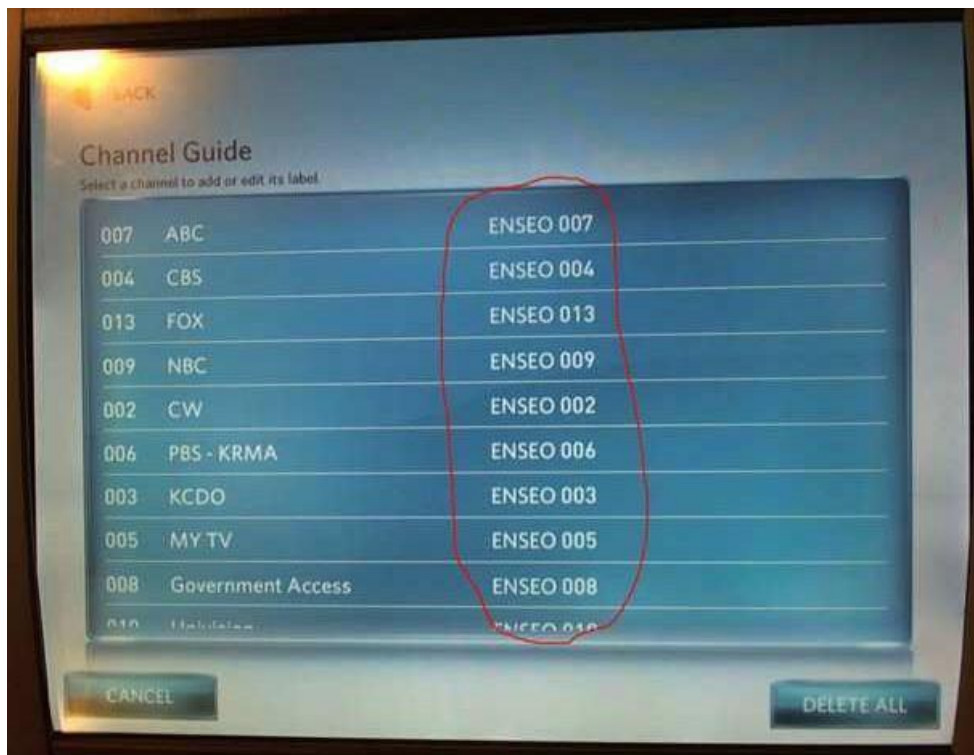
Sample of
software

Console Configuration Precor P62 (w/media adapter)

It's kind of like a spreadsheet – one simply needs to enter appropriate info into each of the cells to create a channel lineup. ENSEO must always be selected as the STB Model because CAB can understand/interpret only the ENSEO commands coming out of the console's IR Blaster cable.

Although the software doesn't allow for keyboard shortcuts to quickly move to and select the contents of the next cell for modification, it does however allow you to open an existing file and modify it, so templates can be created for all the major providers one time and then installers can modify for just the local differences.

Channel lineups can also be programmed directly into the console via the configuration menu, but this is even more tedious. See the Precor documentation for details. Here's a photo of an example channel lineup displayed in the console configuration. Note that ENSEO is specified for all entries:





broadcastvision
entertainment



Troubleshooting

Double button presses – Some set top boxes respond to more than one of the IR codes that we send out. If you notice that pressing a channel button on the console results in multiple presses, simply remove the 2 screws that hold the lid on the CAB and turn on dip switch 2 and 4. If this does not solve the problem, call (888)330-4283 ext.3 for further assistance.

No control over set top box

Check if CAB is getting power and channel commands from the console – CAB contains internal LED power lights. Two indicator LEDs are located on either side of the console-side connector inside the enclosure.

- **GREEN** - Power LED, on whenever the CAB is powered
 - **RED** - Activity LED, flashes whenever the CAB receives and processes commands
- The location of the LEDs is such that they should be visible through the enclosure around the CAB connector to the console.

Incorrect IR emitter placement – If the IR emitter is not in the correct location on the front of the box you may need to move it around until you find the location that works.

Tip: Try initially holding the IR emitter away from the front of the STB initially then continue pressing the channel button while “zeroing in” on the correct IR emitter placement.

Set top box is in RF mode – change to IR mode – Many set top boxes can operate with a hand-held remote in RF or IR mode. For the CAB to function, it is critical that the STB accepts IR channel commands. To test if the STB is in RF mode, place your hand over the hand-held remote control IR transmitter and see if the STB receives channel change commands. If the answer is yes, the STB is in RF mode. Check online for instructions to change the STB remote control mode from RF to IR.

BVE Technical Support

Tel: 888.330.4283 x 3 Support@Broadcastvision.com

Troubleshooting (continued)

No control over set top box (continued)

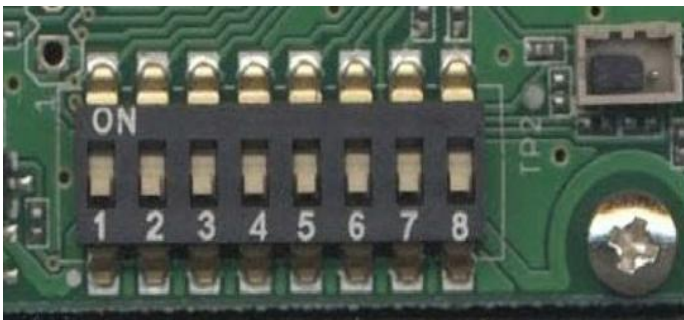
IR signal strength issue – In rare circumstances, the CAB may output too strong of an IR signal for the set top box IR receiver. To test if the IR emitter is over-driving the set top box receiver, pull the emitter away from the front of the set top box, and press the channel button to see if the set top box now receives the channel.

No Continuity between CAB and IR emitter – In some circumstances utilizing the “Far” set top box scenario, the CAT5/6 cable between the set top box and the CAB may not provide full continuity through wall plates etc. It may be helpful to re-locate the STB at the base of the cardio and re-test. Or, it may be helpful to temporarily run an alternate CAT5/6 cable from the CAB to the set top box then re-test.

CAB not programmed for the correct set top box - Your CAB is defaulted for Broadcastvision’s popular “Unicode” setting which provides control of the most popular cable, satellite and IPTV set top boxes.

The CAB can be quickly configured on site to operate other popular set top boxes by flipping dip switches inside the CAB enclosure as pictured below. All CABs are shipped pre-programmed what we call unicode. Unicode works with most of the well known providers. If for some reason the CAB is not operational, please call Broadcastvision support at **888.330.4283 x 3** to determine the dip switch settings for your cable, satellite, or IPTV provider.

Note: When the CAB is shipped pre-programmed, the dipswitch setting will be in the OFF position.





broadcastvision
entertainment



Terms and Conditions

BVE Stock Items Returned for Credit

BVE manufactured products may only be returned for credit with written authorization from BVE within 30 days of the original invoice date. A 25% restocking fee will be charged for all returns. All products being returned to BVE require a Return Authorization number. Products must be returned in original condition with the original packaging, components and support material. Credit is contingent upon inspection of returned items.

Return Authorizations

A Return Authorization number must be issued from BVE prior to any item being returned for credit, repair or exchange. Items returned without approval will be refused and returned to the sender. Requests for a Return Authorization number may be made to our Customer Service Department at 1-888-330-4283.

Repairs and Replacements

A warranty repair of BVE manufactured product includes parts, labor and the return GROUND shipping to the customer. Repairs made while under warranty are covered for the duration of the valid warranty period. Non-Warranty repairs receive a "Repair Warranty" of 90 days parts and labor only. Warranties do not include on-site service. Advance Replacements of items in question may be arranged if the product is within 30 days of invoice date and is subject to product availability. Advance Replacements must be secured by the customer with a valid Credit Card or Net30 terms of an account in good standing.

Shipping

Shipping dates are estimates only. Products will be shipped per the designated Shipping Method. Paying for an accelerated Shipping Method only indicates the product will ship by that method when the product or repair is available. BVE will not be held responsible to accelerate shipping, discount invoices or compensate customers for loss of profits, business or goodwill due to back orders, shortages, shipping complications, damages, product malfunction, labor, construction, nature or delays.

Warranties

All products sold by BVE carry the original manufacturers' warranty. Warranty begins on the invoice date of purchase from BVE or an authorized BVE Dealer / Distributor. Warranty may alternately begin on the date of installation with a valid Installation Completion Form from an authorized BVE Dealer, Distributor or Installer. Warranties do not cover damage due to abuse, misuse, modification or the result of any third party. Warranties are not transferable and cover only the original purchaser with a valid invoice. Manufacturers will, at their option repair or replace equipment, as they deem necessary. Warranties do not include "on-site" service.

BVE Technical Support

Tel: 888.330.4283 x 3 Support@Broadcastvision.com