

# BROADCAST VISION C.A.B. INSTALLATION GUIDE

Using Broadcast Vision CAB in conjunction with your TRUE Fitness console will eliminate the need for a remote control when a Set Top Box is being used to receive TV signal from a satellite or cable TV service provider. With a C.A.B., the buttons on the TRUE console can be used to control a compatible Set Top Box.

## Step 1 Cable Connections:

a) Connect the Cat5 connection coming from the C.A.B to the bottom C-SAFE on the back of the TRUE Console.

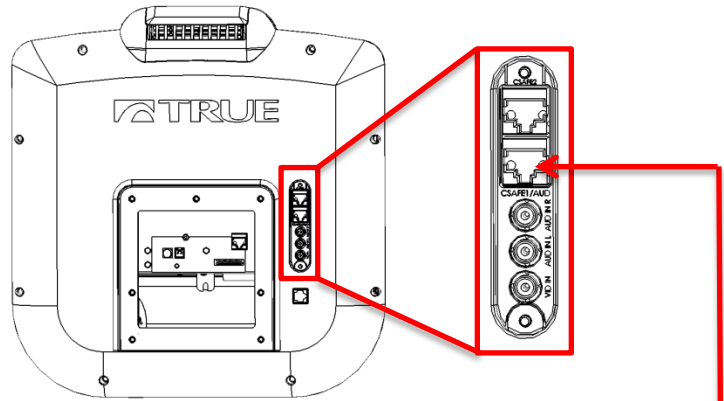
b) Mount the C.A.B. IR Blaster (at the end of the longer cable) to the IR receiver on the set top box.  
**NOTE:** the IR blaster has a self-adhesive backing

c) Attach the C.A.B. to the back of the TRUE console using the adhesive velcro included.

\*For Transcend Touchscreens, proceed to step 2A on the next page.

\*\*For Escalate<sup>15</sup> TFT consoles, proceed to step 2B on page 4.

### TRUE Console:



### Broadcast Vision C.A.B.:



### Set Top Box:

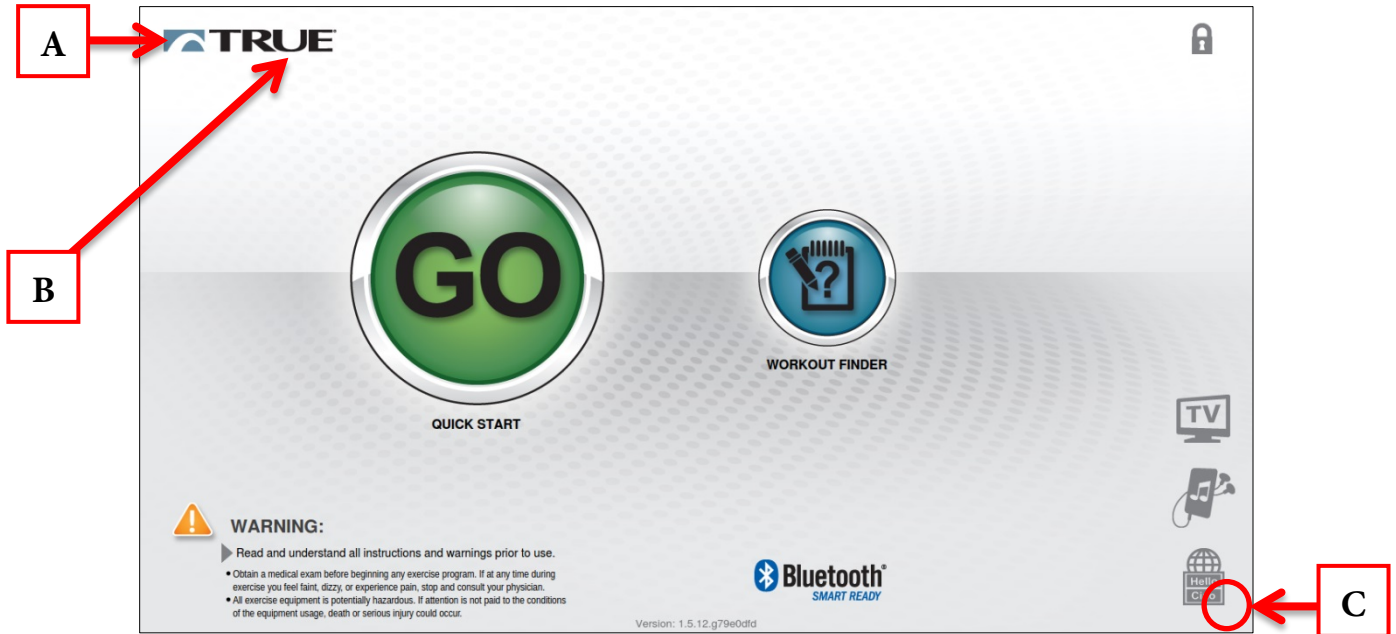


# BROADCAST VISION C.A.B. INSTALLATION GUIDE

## Step 2A Transcend Touchscreen Software Setup:

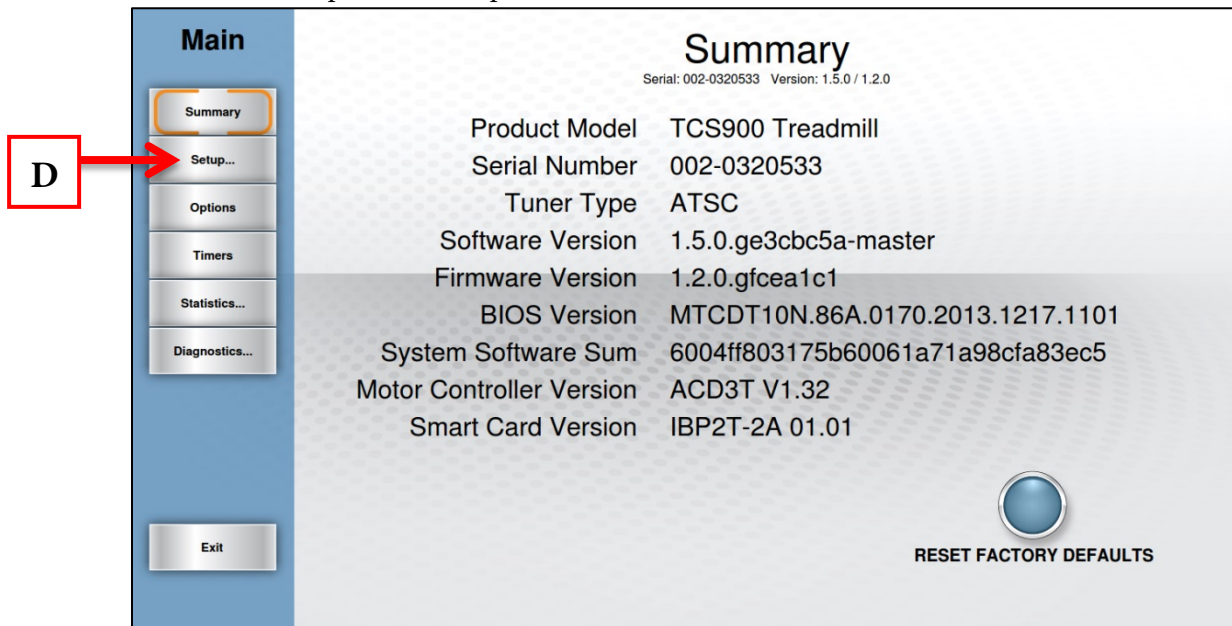
### a) Enter Service Mode:

Press and hold the TRUE logo (A) in the upper left corner of the home screen. When the word “TRUE” (B) begins to flash, release the logo and press and hold the lower right corner of the screen (C).



### b) Enter the Setup Menu:

- From the main menu, press the Setup button (D)

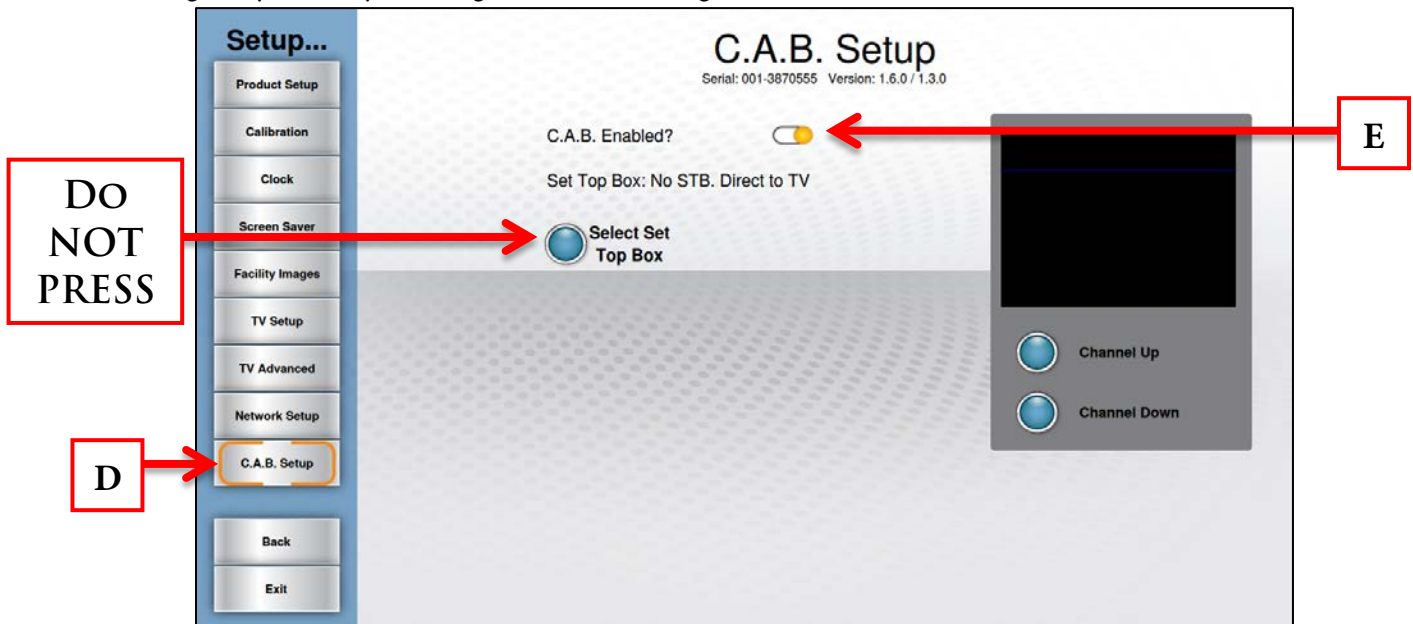


# BROADCAST VISION C.A.B. INSTALLATION GUIDE

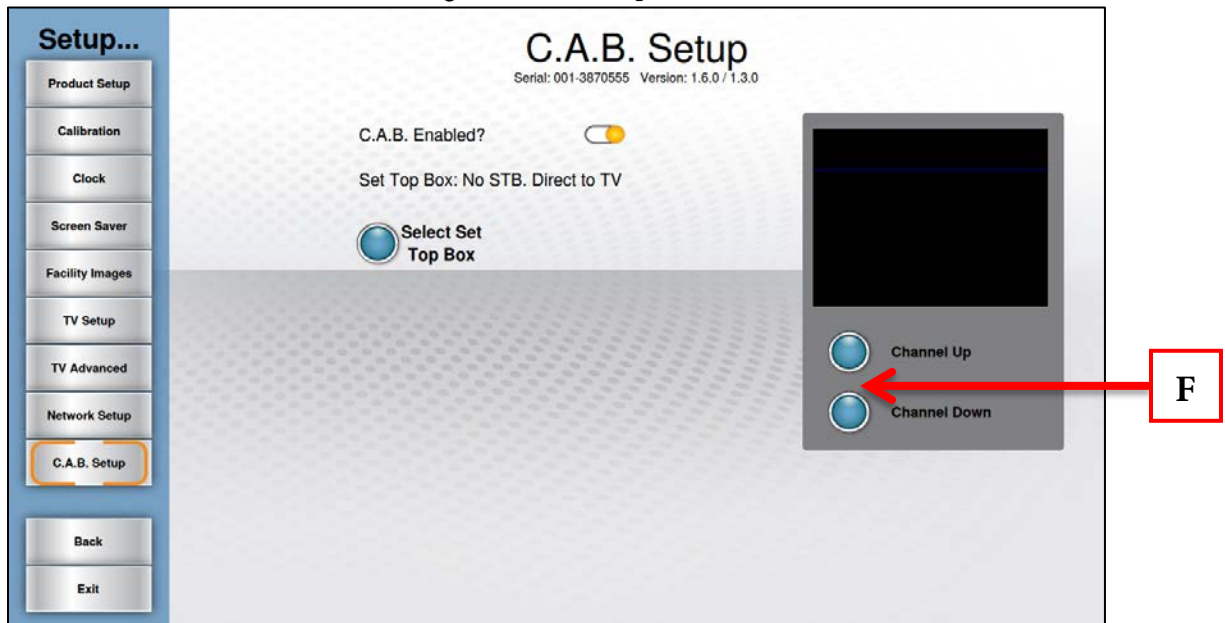
## Step 2A Transcend Touchscreen Software Setup (continued):

### c) C.A.B. Setup:

- From the setup Menu, press C.A.B. Setup button (D).
- On the C.A.B. Setup screen, press the C.A.B. Enabled? slider button to enable it (E).
- **DO NOT** press the Select Set Top Box Button. The C.A.B. has been preconfigured by Broadcast vision and damage may occur by selecting an alternate configuration.



- Once enabled, the C.A.B. can be tested using the Channel Up & Channel Down buttons (F).



# BROADCAST VISION C.A.B. INSTALLATION GUIDE

## Step 2B Escalate<sup>15</sup> TFT Console Software Setup:

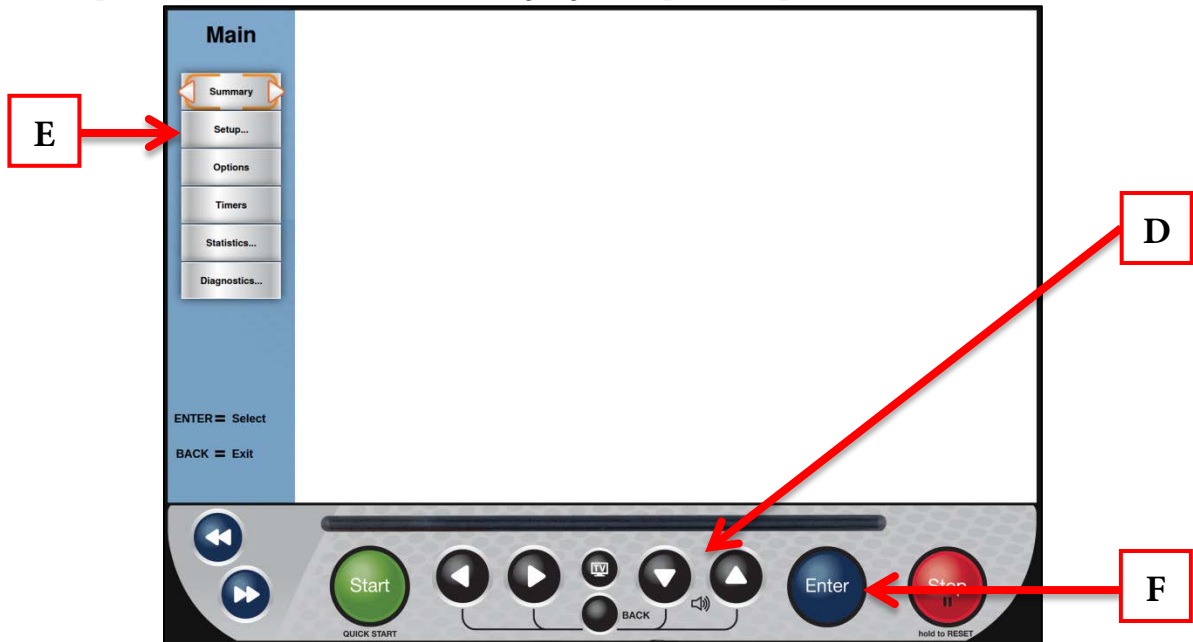
### a) Enter Service Mode:

Enter Service Mode by pressing and holding the Back navigation Button (A). When the TRUE Logo (B) begins to flash, release the navigation button and press and hold the Enter Button(C).



### b) Enter the Setup Menu:

- Use the Up/Down Selection Buttons (D) to Highlight Setup (E) and press Enter (F).



# BROADCAST VISION C.A.B. INSTALLATION GUIDE

## Step 2B Escalate<sup>15</sup> TFT Console Software Setup (continued):

### c) C.A.B. Setup Menu:

- Use the Up/Down Selection Buttons (G) to Highlight C.A.B. Setup (H) and press Enter (I).
- With “C.A.B. Enabled?” Selected (J), Press Enter (I) to enable it.



### d) C.A.B. Setup Menu (continued):

- **DO NOT** select a Set Top Box. The C.A.B. has been preconfigured by Broadcast vision and damage may occur by selecting an alternate configuration.



# BROADCAST VISION C.A.B. INSTALLATION GUIDE

## Step 2B Escalate<sup>15</sup> TFT Console Software Setup (continued):

### d) C.A.B. Setup Menu (continued):

- Once enabled, the C.A.B. can be tested using Forward & Back Navigation buttons (L).



### Contacting Service:

Please contact our service department with any questions regarding this process using the information below:

**TRUE Customer Service Department:**

**Phone:** 800.883.8783

**Email:** [service@truefitness.com](mailto:service@truefitness.com)

**Days & Hours:** Monday – Friday | 8:30am to 5:00pm CST